



ΧΩΡΙΚΕΣ ΒΑΣΕΙΣ ΔΕΔΟΜΕΝΩΝ

Εγκατάσταση PostgreSQL

Διδάσκοντες:

N. Μήτρου, Καθ. ΣΗΜΜΥ ΕΜΠ

A. Ζαφειρόπουλος, Δρ. Μηχ. ΣΗΜΜΥ ΕΜΠ



Οδηγίες Εγκατάστασης

- Κατεβάζετε την τελευταία έκδοση της PostgreSQL από τον σύνδεσμο <https://www.enterprisedb.com/downloads/postgres-postgresql-downloads>
- Ακολουθείτε τα βήματα εγκατάστασης



Οδηγίες Εγκατάστασης

Setup



Select Components



Select the components you want to install; clear the components you do not want to install. Click Next when you are ready to continue.

- PostgreSQL Server
- pgAdmin 4
- Stack Builder
- Command Line Tools

Click on a component to get a detailed description

VMware InstallBuilder

< Back

Next >

Cancel



Οδηγίες Εγκατάστασης

Setup

Password


Please provide a password for the database superuser (postgres).

Password

Retype password

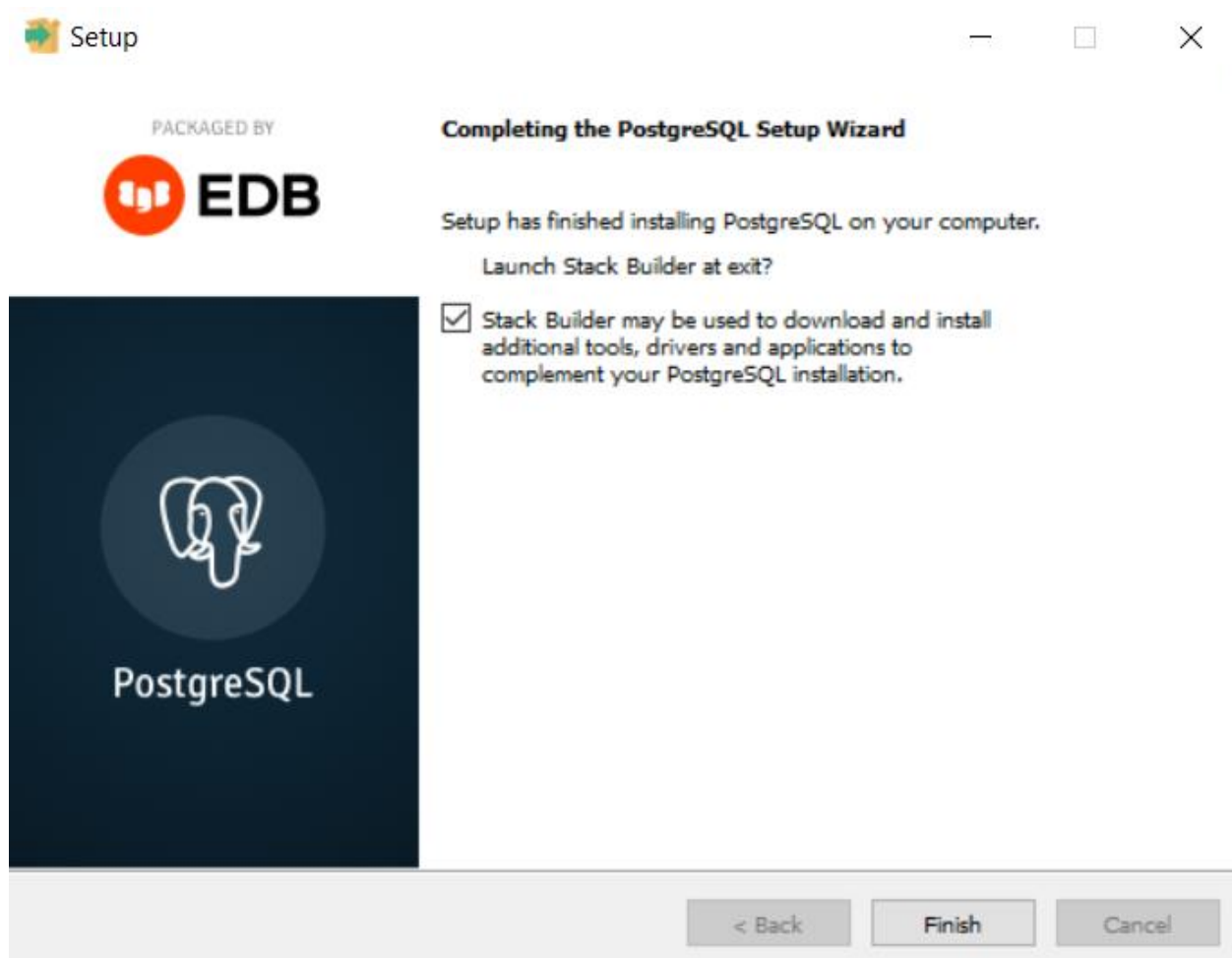
VMware InstallBuilder

< Back Next > Cancel





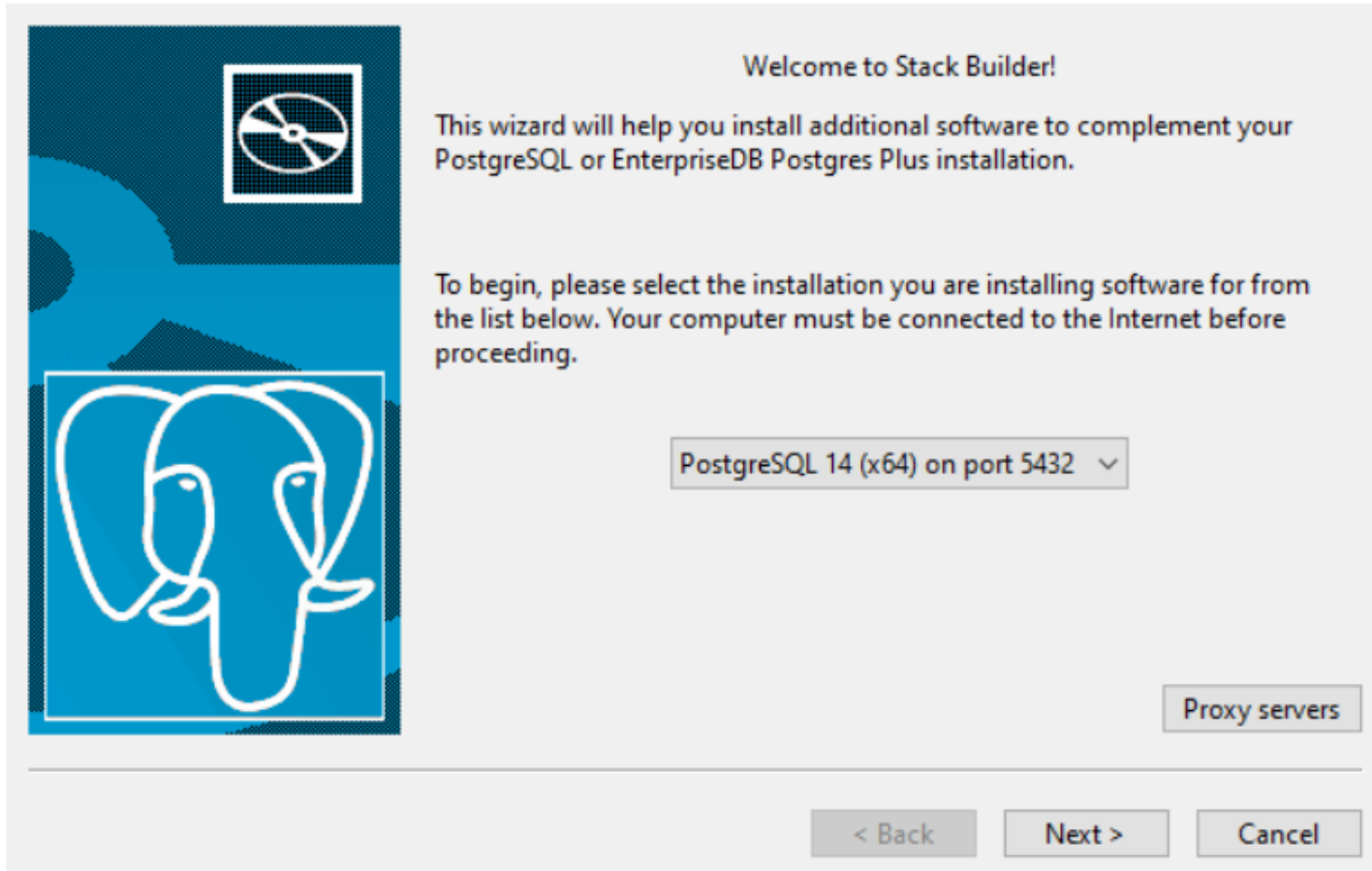
Οδηγίες Εγκατάστασης





Οδηγίες Εγκατάστασης

Stack Builder 4.2.1



Welcome to Stack Builder!

This wizard will help you install additional software to complement your PostgreSQL or EnterpriseDB Postgres Plus installation.

To begin, please select the installation you are installing software for from the list below. Your computer must be connected to the Internet before proceeding.

PostgreSQL 14 (x64) on port 5432 ▾

Proxy servers

< Back Next > Cancel

The image shows a screenshot of the Stack Builder 4.2.1 installation wizard. The window has a title bar with the application name and a close button. The main content area is light gray and contains a blue sidebar on the left with a white icon of a CD-ROM and a white outline of an elephant's head. The main text area contains a welcome message, instructions, and a dropdown menu showing 'PostgreSQL 14 (x64) on port 5432'. There is also a 'Proxy servers' button and navigation buttons at the bottom: '< Back', 'Next >', and 'Cancel'.

Οδηγίες Εγκατάστασης

Stack Builder 4.2.1



Please select the applications you would like to install.

- [-] Categories
 - [+] Add-ons, tools and utilities
 - [+] Database Drivers
 - [+] Database Server
 - [+] Registration-required and trial products
 - [+] Spatial Extensions
 - PostGIS 3.1 Bundle for PostgreSQL 14 (64 bit) v3.1.4
 - [+] Web Development

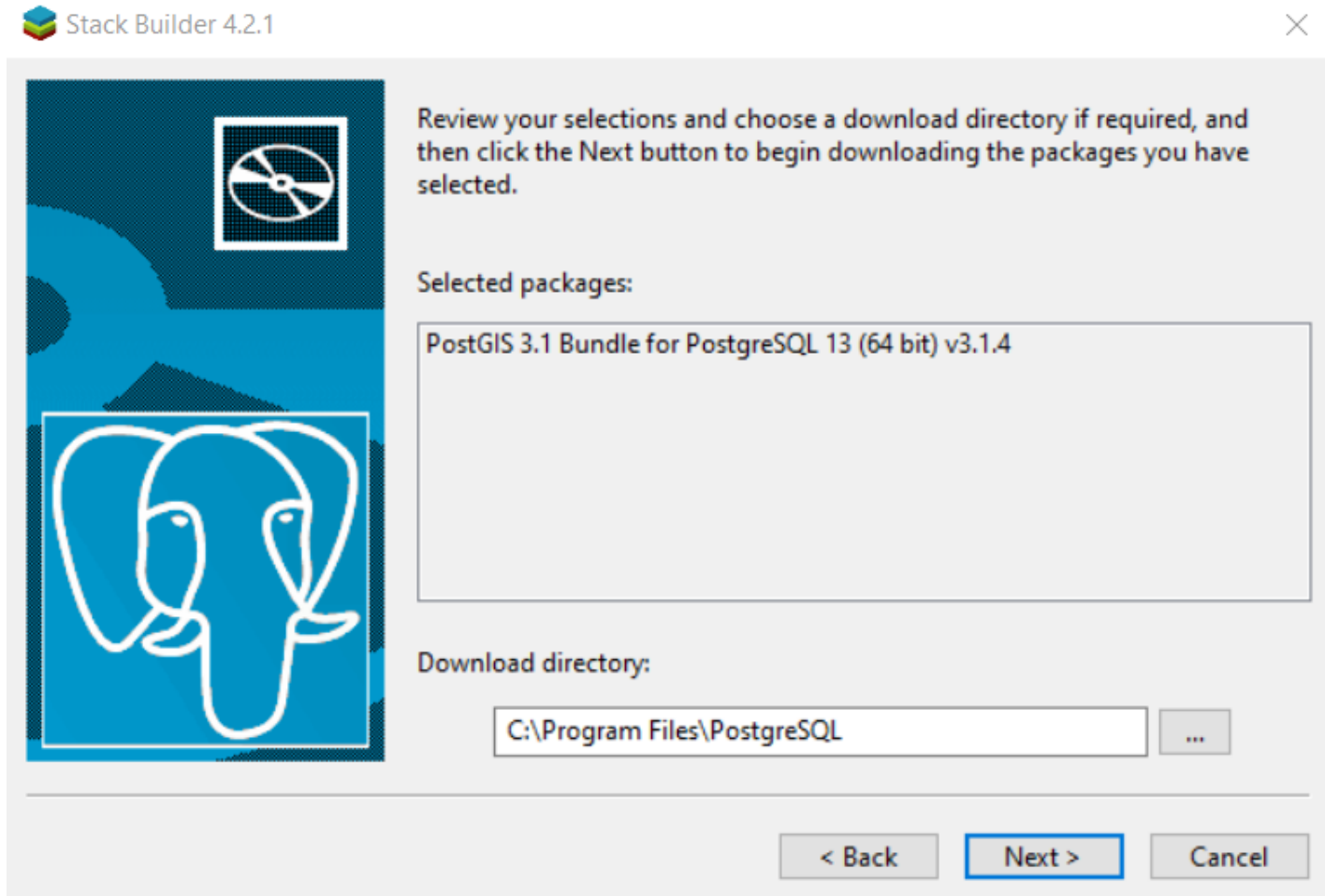
< Back

Next >

Cancel



Οδηγίες Εγκατάστασης





Οδηγίες Εγκατάστασης

Stack Builder 4.2.1

PostGIS Bundle 3.1.4 for PostgreSQL x64 13 Setup

Choose Components
Choose which features of PostGIS Bundle 3.1.4 for PostgreSQL x64 13 you want to install.

Check the components you want to install and uncheck the components you don't want to install. Click Next to continue.

Select components to install:

Component	Description
<input checked="" type="checkbox"/> PostGIS	Position your mouse over a component to see its description.
<input checked="" type="checkbox"/> Create spatial database	

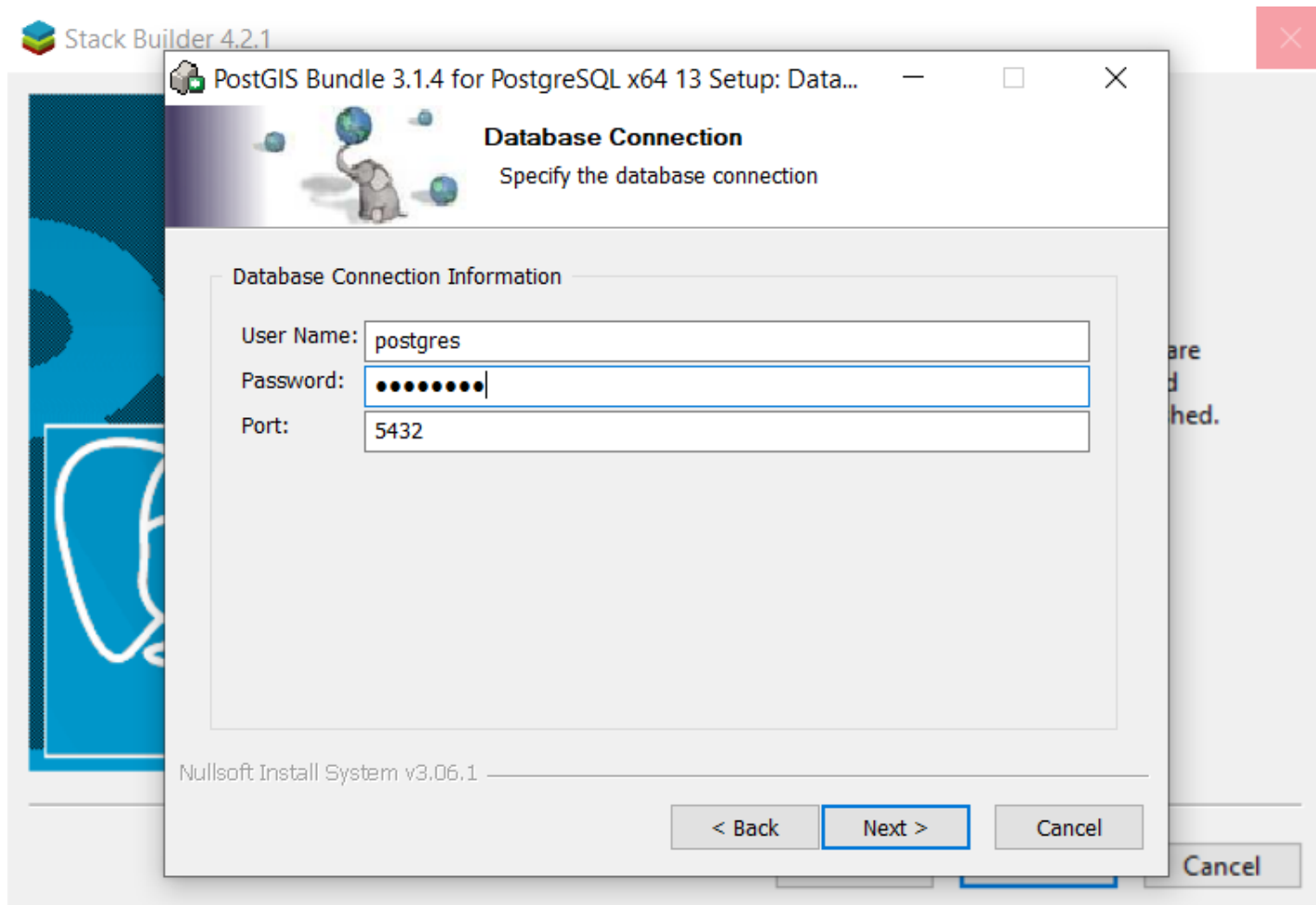
Space required: 289.4 MB

Nullsoft Install System v3.06.1

< Back **Next >** Cancel

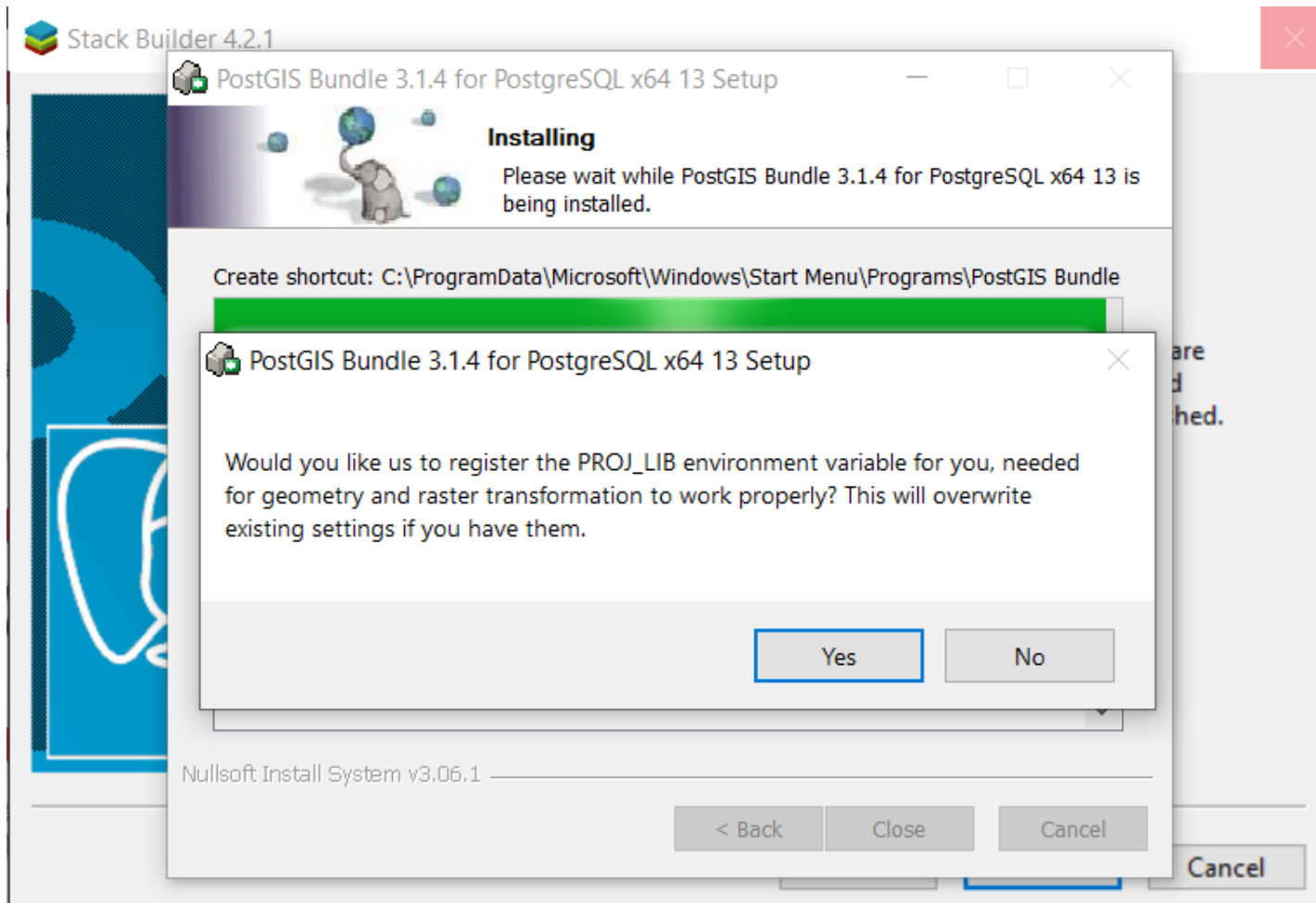


Οδηγίες Εγκατάστασης





Οδηγίες Εγκατάστασης





PostgreSQL – Βασικές Εντολές

- PSQL commands (interactive terminal for Postgres)
 - \list or \l - list all databases
 - \l+ - list all databases with additional information
 - \d – list tables in a database
 - \d tablename - show table definition
 - \d+ tablename - show extended table information
 - \du – list all users
 - \q quit
 - \help
 - create database dbname; - create a database
 - drop database dbname; - delete a database
 - \c dbname; - connect to a database